

AI-G802SFP Series

L2+ 8-Port 10/100/1000T 802.3at PoE + 2-Port 1000X SFP Industrial Managed Ethernet Switch



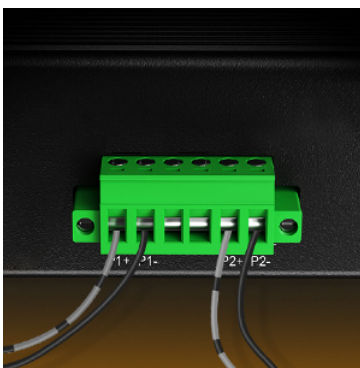
Features

- ▶ Support 8x10/100/1000Base-T + 2x1000Base-X SFP
- ▶ 10/100/1000Mbps RJ45 Port supports Full/Half-duplex, Auto-negotiation, Auto MDI/MDIX
- ▶ IEEE802.3af/at compliant
- ▶ DIP Switch supports one-key VLAN, one-key Ring Management, PoE Reset and 250mPoE Network
- ▶ 9K Bytes Jumbo Frame
- ▶ IEEE 802.3az Energy Efficient Ethernet (EEE)
- ▶ IP40 Aluminum Case
- ▶ Supports DIN-Rail installation
- ▶ -40°C to 80°C (-40°F to 176°F) operating temperature

INTRODUCTION

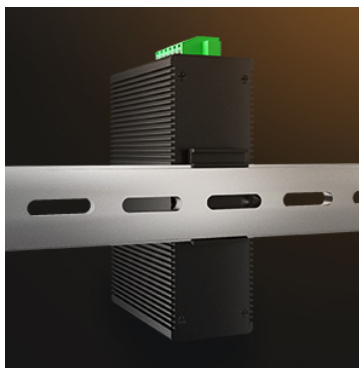
Acumen Technologies' AI-G802SFP Series is the L2+ managed 8-port 10/100/1000Base-T 802.3at PoE + 2-port 1000Base-X SFP hardened Ethernet switch. The Switch has 8 TP ports and 2 fiber ports. The TP (RJ45) supports 10/100/1000Base-T(X), Full/Half duplex mode, and auto MDI/MDI-X connection; 1000Base-X SFP port supports 1 or 2 core Single-mode or Multi-mode fiber. With its reliable design and ease of use, the product is a great choice for integrating networks consisting of network devices such as IP cameras and wireless access points between remote locations.

APPLICATION



Redundant Power Supply

This industrial ethernet switch support dual redundant power supply. Each of the power supplies will have the capacity to run the device on its own. This makes sure that the switch could operate normally even if one power supply fails.



DIN Rail Mountable


Ultra Compact industrial Ethernet switch can be mounted on a 35mm din rail. Save time and space.



Industrial-grade Electronic Components

The industrial ethernet switch adopt with high quality of electronic components. Make sure it can be widely used in various industrial scenarios.

Ethernet	
Standards:	IEEE802.3 10BASE-T
	IEEE802.3u 100BASE-TX/FX
	IEEE802.3ab 1000BASE-T
	IEEE802.3z 1000BASE-X
	IEEE802.3ae 10GBase-R
	IEEE802.3p QoS
	IEEE802.1d Spanning Tree
Forward & Filtering Rate:	14,880pps (10Mbps)
	148,800pps (100Mbps)
	1,488,000pps (1000Mbps)
	1,488,000,000pps (10000Mbps)
Packet Buffer Memory:	12M bits
Forwarding capacity:	8.93 Mpps
Switching capacity:	16 Gbps
Max Packet Length:	9K Bytes Jumbo Frame
Address Table Size:	8K MAC Addresses
Interface	
Connector:	8 x RJ45
RS485:	1 x RS485 (Optional)
Optical Port:	2 x 1000Base-X SFP
USB-C:	1 x USB-C (for Management)
RS485 Serial Interface (Optional)	
Physical interface	Industrial standard 3-pin screw terminal
Data type	1Ch RS485 Bi-Direction
RS-485 signals	Data +, Data-, GND
Serial port line distance (copper)	1000 meters
Baud rate	0 ~ 800kbps
PoE (Power over Ethernet)	
Standard:	IEEE 802.3at Power over Ethernet Plus
	IEEE 802.3af Power over Ethernet
Port:	RJ45 8x10/100/1000Base-T
Power Pin Assignment	4/5(+), 7/8(-)
PoE Budget:	Up to 240-watt PoE budget
Environmental	
Operating Temperature:	-40°C to 80°C (-40°F to 176°F)
Storage Temperature:	-40°C to 85°C (-40°F to 185°F)
Operating Humidity:	10% to 95% non-condensing

MTBF	> 200,000 hrs			
Electrical and Mechanical				
Input Power:	48~57VDC, Redundant Power (6-pin Terminal Block)			
Power Consumption:	8W Max.(PoE in Use<240W)			
Protection:				
Power Input Overload:	Automatic Resettable			
Reverse Polarity:	Present			
DIP Switch				
4-digit DIP switch function 	DIP	Function	Settings	
	SW 1	VLAN	ON - Enabled	OFF - Disabled
	SW 2	Ring Management	ON - Enabled	OFF - Disabled
	SW 3 (to be upgraded)	250m PoE Network	ON - Enabled	OFF - Disabled
	SW 4 (to be upgraded)	PoE Reset	ON - Enabled	OFF - Disabled
LED Indicators:				
PWR:	Power Status			
Ethernet (Per Port):	Link/Activity			
PoE:	PoE Status			
Fiber:	Gigabit SFP Port: F9~F10			
Dimensions (WxDxH):	149 x 114 x 50 mm			
Weight:	0.55Kg			
Casing:	Aluminum Case			
Mounting Options:	DIN-Rail mount			
Software Features				
Redundancy Protocols	Support STP/RSTP/MSTP/ERPSv2, Link Aggregation			
Multicast Support	Support IGMP Snooping V1/V2/V3, support GMRP, GVMP,802.1Q			
VLAN	Support IEEE 802.1Q 4K VLAN, support QINQ, Double VLAN,			
Time Management	SNTP			
QOS	Flow-based redirection Flow-based rate limiting Flow-based packet filtering 8*Output queues of each port 802.1p/DSCP priority mapping Diff-Serv QoS, Priority Mark/Remark Queue Scheduling Algorithm (SP, WRR, SP+WRR)			
ACL	Port-based Issuing ACL ACL based on port and VLAN L2 to L4 packet filtering, matching first 80 bytes message. Provide ACL based on MAC, Destination MAC address, IP Source, Destination IP, IP Protocol Type, TCP/UDP Port, TCP/UDP Port Range, and VLAN, etc			

PoE Management	Total power limit of PoE power supply PoE output power allocation PoE output priority configuration PoE working status Scheduling of PoE operation
Diagnostic Maintenance	Support port mirroring, Syslog, Ping
Management Function	Support CLI, WEB, SNMPv1/v2/v3, Telnet server for management, EEE, LLDP, DHCP Server/Client (IPv4/IPv6), Cloud/MQTT
Alarm Management	Support 1 way relay alarm output, RMON, TRAP
Security	ESD Protection, 6KV Surge Protection, HTTPS/SSLv3, AAA & RADIUS, SSH2.0 Support DHCP Snooping, Option 82, 802.1X security access, Support user hierarchical management, ACL access control list, Support DDOS, port-based MAC filtering / binding, MAC black holes, IP source protection, Port isolation, ARP message limit
Advance Layer 2+ Features	
Regulatory Approvals	
ISO9001, CE, RoHS, FCC Class A	
EN55022:2010+AC: 2011, Class A	
EN 61000-3-2: 2006+A1: 2009+A2: 2009	
EN 61000-3-3: 2013	
EN55024:2010	
IEC 61000-4-2: 2008 (ESD)	
IEC 61000-4-3: 2010 (RS)	
IEC 61000-4-4: 2012 (EFT)	
IEC 61000-4-5: 2014 (Surge)	
IEC 61000-4-6: 2013 (CS)	
IEC 61000-4-8: 2009 (PFMF)	