

# AI-G804SFP Series

**L2+ 8-Port 10/100/1000T 802.3at PoE + 4-Port 1000X SFP Industrial Managed Ethernet Switch**



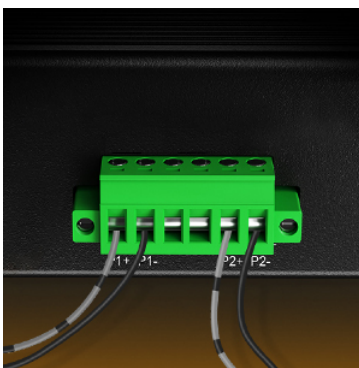
## Features

- ▶ Support 8x10/100/1000Base-T + 4x1000Base-X SFP
- ▶ 10/100/1000Mbps RJ45 Port supports Full/Half-duplex, Auto-negotiation, Auto MDI/MDIX
- ▶ IEEE802.3af/at compliant
- ▶ DIP Switch supports one-key VLAN, Ring Topology (recovery data fast time < 20 ms)
- ▶ 9K Bytes Jumbo Frame
- ▶ IEEE 802.3az Energy Efficient Ethernet (EEE)
- ▶ IP40 Aluminum Case
- ▶ Supports DIN-Rail installation
- ▶ -40°C to 80°C (-40°F to 176°F) operating temperature
- ▶ 5-Year Warranty

## INTRODUCTION

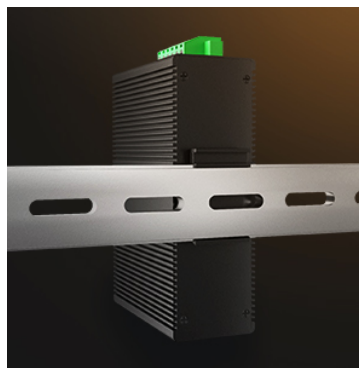
**Acumen Technologies' AI-F804SFP Series** is the L2+ managed 8-port 10/100/1000Base-T 802.3at PoE + 4-port 1000Base-X SFP hardened Ethernet switch. The Switch has 8 Gigabit Ethernet ports and 4 SFP fiber ports. TP (RJ45) supports 10/100/1000Base-T(X), Full/Half duplex mode, and auto MDI/MDI-X connection; 1000Base-X supports 1 or 2 core Single-mode or Multi-mode fiber. With its reliable design and ease of use, the product is a great choice for integrating networks consisting of network devices such as IP cameras and wireless access points between remote locations.

## APPLICATION



### Redundant Power Supply

This industrial ethernet switch support dual redundant power supply Each of the power supplies will have the capacity to run the device on its own. This makes sure that the switch could operate normally even if one power supply fails.



### DIN Rail Mountable


Ultra Compact industrial Ethernet switche can be mounted on a 35mm din rail.Save time and space.



### Industrial-grade Electronic Components

The industrial ethernet switch adopt with high quality of electronic components.Make sure it can be widely used in various industrial scenarios.

<b>Ethernet</b>	
Standards:	IEEE802.3
	IEEE802.3u , IEEE802.3x
	IEEE802.3ab , IEEE802.3z
	IEEE802.3ad , IEEE802.3p QoS
	IEEE802.1w , IEEE802.1s , IEEE802.1x
	IEEE802.1p , IEEE802.1Q , IEEE802.1d Spanning Tree
Forward & Filtering Rate:	14,880pps (10Mbps)
	148,800pps (100Mbps)
	1,488,000pps (1000Mbps)
Packet Buffer Memory:	12M bits
Processing Type:	Store-and-Forward
Backplane bandwidth	110Gbps
Max Packet Length:	9K Bytes Jumbo Frame
Address Table Size:	8K MAC Addresses
<b>Interface</b>	
Connector:	8 x RJ45
RS485:	1 x RS485 (Optional)
Optical Port:	4 x 1000Base-X SFP
USB-C:	1 x USB-C (for Management)
<b>RS485 Serial Interface (Optional)</b>	
Physical interface	Industrial standard 3-pin screw terminal
Data type	1Ch RS485 Bi-Direction
RS-485 signals	Data +, Data-, GND
Serial port line distance (copper)	1000 meters
Baud rate	0 ~ 800kbps
<b>PoE (Power over Ethernet)</b>	
Standard:	IEEE 802.3at Power over Ethernet Plus
	IEEE 802.3af Power over Ethernet
Port:	RJ45 8x10/100/1000Base-T
Power Pin Assignment	4/5(+), 7/8(-)
PoE Budget:	Up to 240-watt PoE budget
<b>Environmental</b>	
Operating Temperature:	-40°C to 80°C (-40°F to 176°F)
Storage Temperature:	-40°C to 85°C (-40°F to 185°F)
Operating Humidity:	10% to 95% non-condensing
MTBF	> 200,000 hrs
<b>Electrical and Mechanical</b>	

Input Power:	48~57VDC, Redundant Power (6-pin Terminal Block)		
Power Consumption:	8W Max. (PoE in Use<240W)		
Protection:			
Power Input Overload:	Automatic Resettable		
Reverse Polarity:	Present		
<b>DIP Switch</b>			
4-digit DIP switch function 	DIP	Function	Settings
	SW 1	VLAN	ON - Enabled    OFF - Disabled
	SW 2	Ring Management	ON - Enabled    OFF - Disabled
	SW 3 (to be upgraded)	250m PoE Network	ON - Enabled    OFF - Disabled
	SW 4 (to be upgraded)	PoE Reset	ON - Enabled    OFF - Disabled
<b>LED Indicators:</b>			
PWR	Power Status		
Ethernet (Per Port)	Link/Activity		
PoE	PoE Status		
Fiber:	Gigabit SFP Port: F9~F12		
Dimensions (WxDxH):	149 x 114 x 50 mm		
Weight:	0.55Kg		
Casing:	Aluminum Case		
Mounting Options:	DIN-Rail mount		
<b>Software Features</b>			
Redundancy Protocols	Support STP/RSTP/MSTP/ERPSv2, Link Aggregation		
Multicast Protocols	Support IGMP Snooping V1/V2/V3, support GMRP, GVMP, 802.1Q		
VLAN	Support IEEE 802.1Q 4K VLAN, support QINQ, Double VLAN,		
Time Management	SNTP		
QOS	Flow-based redirection Flow-based rate limiting Flow-based packet filtering 8*Output queues of each port 802.1p/DSCP priority mapping Diff-Serv QoS, Priority Mark/Remark Queue Scheduling Algorithm (SP, WRR, SP+WRR)		
ACL	Port-based Issuing ACL ACL based on port and VLAN L2 to L4 packet filtering, matching first 80 bytes message. Provide ACL based on MAC, Destination MAC address, IP Source, Destination IP, IP Protocol Type, TCP/UDP Port, TCP/UDP Port Range, and VLAN, etc		
PoE Management	Total power limit of PoE power supply PoE output power allocation		

	PoE output priority configuration PoE working status Scheduling of PoE operation
Diagnostic Maintenance	Support port mirroring, Syslog, Ping
Management Function	Support CLI, WEB, SNMPv1/v2c/v3, Telnet server for management, EEE, LLDP, DHCP Server/Client (IPv4/IPv6), Cloud/MQTT
Alarm Management	port 1 way relay alarm output, RMON, TRAP
Security	ESD Protection, 6KV Surge Protection, HTTPS/SSLv3, AAA & RADIUS, SSH2.0 Support DHCP Snooping, Option 82, 802.1X security access, Support user hierarchical management, ACL access control list, Support DDOS, port-based MAC filtering / binding, MAC black holes, IP source protection, Port isolation, ARP message limit
Advance Layer 2+ Features	IPv4/IPv6 Management Static Route
<b>Regulatory Approvals</b>	
ISO9001, CE, RoHS, FCC Class A	
EN55022:2010+AC: 2011, Class A	
EN 61000-3-2: 2006+A1: 2009+A2: 2009	
EN 61000-3-3: 2013	
EN55024:2010	
IEC 60068-2-32 (Free fall)	
IEC 60068-2-27 (Shock)	
IEC 60068-2-6 (Vibration)	
IEC 61000-4-2 (ESD)	
IEC 61000-4-3 (RS)	
IEC 61000-4-4 (Surge)	