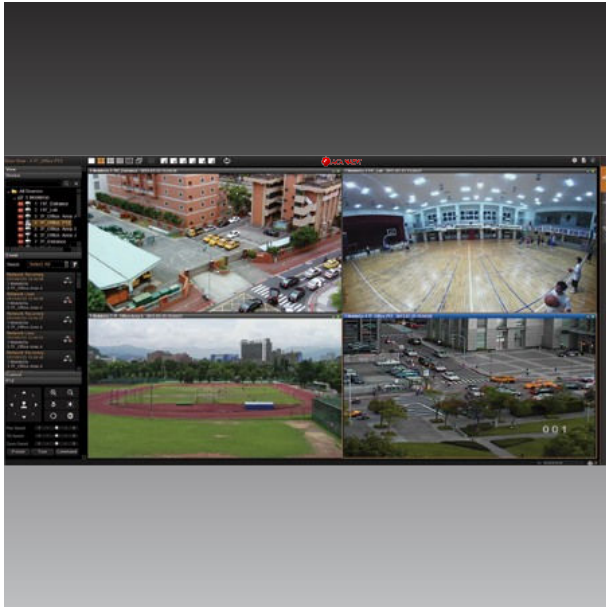


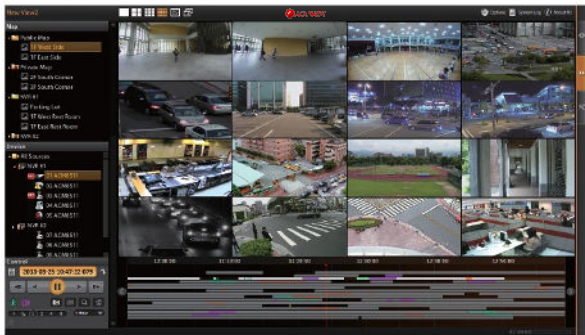
CMS AI

Software CMS



- Maximum Number of Video Devices: Unlimited (Free License: 2)
- Multi-Browser Support for Lite Web Client
- View Layout up to 225 Channels for workstation (CMS v.2.0.13.41)
- Functions: Live view, Playback, Configuration maintenance, Face recognition, License plate recognition, Multi-target recognition, Attendance, Temperature monitor and Thermal imaging etc.
- Workstation, Web Client, Mobile Client
- Event trigger, response and notification
- Video export formats: RAW, AVI, MP4, EXE
- One-click installation: Without any configuration, quick installed and automatically start server
- Alarm configuration for motion event, intelligent analysis event, Search and export of linked alarm log pictures, Real-time alarm viewing, Possibility to view latest priority alarm when viewing alarm information in the alarm pop-up window, configuration alarm sounds for speech

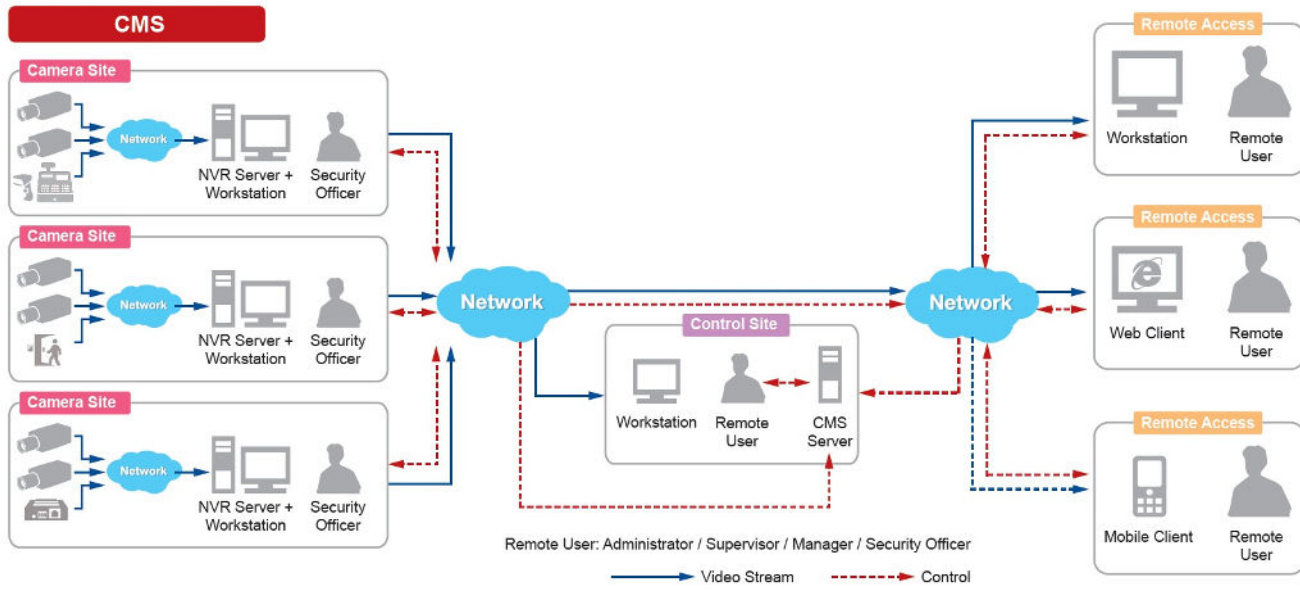
Up to 64-channel synchronized playback



Mobile client (iOS, Android) access



► **Solution Diagram**



► Specifications

Device

Product Type	Software CMS
Maximum Resolution	Support All Onvif Cameras in all Recolitions
Maximum Number of Video Devices	Unlimited
Maximum Number of POS devices	Unlimited (requires additional license)
Maximum Number of Access Control and Network I/O devices	Unlimited (requires additional license)
Maximum Number of Clients	Local: 1, Remote: Unlimited, (recommended up to 5)

Hardware

System Requirements	CPU: Intel Core i7-4770S or better RAM: 8GB or better Operating System: Windows 7 (or newer) - offering standalone models: CMS-100, CMS-200, CMS-400, CMS-401
---------------------	---

License

License required	Yes
Free License	2

Live View

Display Layout Mode	IE client: 1, 3, 4, 5, 6, 8, 9, 10, 12, 16, 18, 24, 25, 35, 36, 48, 49, 64 Lite web client: 1, 3, 4, 5, 6, 8, 9, 10, 12, 16 Workstation: 1, 3, 4, 5, 6, 8, 9, 10, 12, 16, 18, 24, 25, 35, 36, 48, 49, 64, 81, 100, 121 (11x11), 144 (12x12), 169 (13x13), 196 (14x14), 225 (15x15) ** CMS display grid cells can be merged into different shape and size.
---------------------	---

Fisheye Dewarping	Yes
Digital Zoom	Yes, at least 64x digital zoom (Actual digital zoom ratio vary depending mainly on camera resolution, screen resolution and view layout.)
Event Status	Alarm display, Alarm processing, Alarm operation, Interface display, Toolbar alarm shortcut settings
Instant Playback	Instant Playback in live view window
Embedded websites in Live View	Display and connect to pre-configured embedded website

Map

e-Map	Yes
Google Map	Yes
Layout	Area maps with camera icons, small live view windows, view linker, source linker, event trigger
Setup	e-Map image upload, Google maps settings and preset management, camera positioning, vision angle and pointed direction of camera, view positioning, source positioning, extended devices for Point-of-sale (POS), Access Control, Network I/O , GIS offline/online , Multilevel , Radar PTZ Linkage, radar zoom linkage , Custom map
PTZ Mode	Mouse PTZ mode to control e-Map video streams

PTZ

PTZ Control	PTZ Control, Speed Control
Joystick	USB based joystick supported

Video

Compression	H.265, H.264, MPEG-4, MJPEG
-------------	-----------------------------

Network

Network Protocol & Service	IPv4/v6, TCP, UDP, DHCP Client, HTTP, HTTPS, DNS, NTP, RTP, RTSP, SMTP, FTP, ICMP, ARP, UPnP, LDAP (client), iSCSi
----------------------------	--

Recording

Manual Recording	Yes
Dual Stream Management	Yes

Search & Playback

Playback Control	Continuous forward and backward playback with speeds (1/64, 1/32, 1/16, 1/8, 1/4, 1/2, 1, 2, 4, 8, 16, 32, 64, 128, 256) or frame-by-frame, pause, stop
Synchronized Playback	up to 225 layout grids**
Recording Search	Search video recordings by time, events, channels, bookmarks, notifications and listed as clickable time-based thumbnails for full-size view and snapshot download
Video Export	RAW, AVI, MP4, EXE
Snapshot Export	BMP, JPEG, PNG

Event

Video Push	Support Video Push from Mobile Client devices
------------	---

Event Trigger	Source loss and recovery, Disk full, Disk not found, Disk is available, Schedule service start and stop, Video motion detection, Passive IR sensor, External device through digital input, Sound detection, Video loss, Video Recovery, Network loss and recovery, Point-of-sale (POS) status, Network I/O status, Access Control status, Car park status,
Event Response	NVR:., Play alert sound, Execute system command to activate other programs, E-mail notification with snapshots, Device:., Pop-up window with live video, Switch to hotspot window, Switch to customize view, Play alert sound, Send video to TV Wall server

System

Permission control	Unlimited number of users, Active Directory, Customizable permissions for user groups, Account lockout, Automatic logout after idle, Playback password protected, Password validity period
Watchdog	Support
Client PC Operating System	Windows 7 SP1, Windows 8.1, Windows 10, Windows Server 2008 R2 SP1, Windows Server 2012 R2, Windows Server 2016
Server Operating System	Windows 7 SP1, Windows 8.1, Windows 10, Windows Server 2008 R2 SP1, Windows Server 2012 R2, Windows Server 2016
Mobile Client Program	Mobile device application (Mobile Client) supports Live View, PTZ Control, Video Push, Event/time based search and playback, Supported device(s) iOS, Android device
Language	Multi-Language

Integration

Supported NVR Servers	NVR3 based NVR:
Unified Solution	Fully compatible with Cameras, Video Encoders, Network Video Recorder
GPS Position	Manual setting
ONVIF Compliant	Yes, Profile S (officially listed as ONVIF conformant at www.onvif.org)
Web Browser	IE 11 (Please verify that your computer meets the minimum system requirements for Internet Explorer from Microsoft website.), Lite web client: Microsoft Edge 80.0.361.66 (Normal mode) or newer, Google Chrome 71.0.3578 or newer, Firefox 64.0.2 or newer, Apple Safari 12.0.2 or newer
Third-party Integration	Point of Sale (POS), Access Control, Network I/O, Parking Management Station (PMS), (Various optional integrations requiring additional license)

Interface

Local Access	USB joystick, keyboard & mouse
--------------	--------------------------------

General

Remote Access	Workstation, Web Client, Mobile Client
---------------	--

** The actual maximum number of channels may vary depending on the server/client PC performance and network throughput.

► Ordering Information

CMS-100	800-Channel 1-Bay Mini Standalone CMS with 64-channel display layout, e-Map, HDMI, DVI and Display port, Remote Access, Video Export, 64-Channel Synchronized Playback, 100-channel free license included, 1-Bay (Storage Disks not included), Audio, AC 100-240V
CMS-200	6400-Channel 1-Bay Rackmount Standalone CMS with 64-channel display layout, e-Map, DVI, VGA and Display port, Remote Access, Video Export, 64-Channel Synchronized Playback, 200-channel free license included, 1-Bay (Storage Disks not included), Audio, AC 100-240V
AI-2000	The license is for channel to work on CMS 2. The number of add-on channels supported: 1-6398. Price listed is for single channel add-on license. CMS 2: The Central Management System managing unlimited NVR servers, providing Live view and Playback up to 64 channels; Smart Search; Export video; Event management; e-Map; free license for 2-channel NVR servers included.
AI-XD2000	The license is for network I/O or access control extended device to work on CMS 2. No. of add-on devices supported: 1-6400. Price listed is for single device add-on license. CMS 2: The Central Management System managing unlimited NVR servers, providing Live view and Playback up to 64 channels; Smart Search; Export video; Event management; e-Map; free license for 2-channel NVR servers included.
AI-N2000	License for allowing 1 Line messaging token to be added to the CMS. The Line token allows messaging from the CMS to 1 specific group of Line users. The number of users within Line group are not limited. The number of CMS camera channels is not limited. The application of this solution is to send CMS event messages, such as motion detection alarm, to the Line users (security personnel, supervisors).
AI-S2000	The license is for POS device to work on CMS 2. No. of add-on devices supported: 1-6400. Price listed is for single device add-on license. CMS 2: The Central Management System managing unlimited NVR servers, providing Live view and Playback up to 64 channels; Smart Search; Export video; Event management; e-Map; free license for 2-channel NVR servers included.